

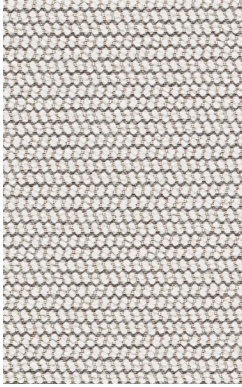
# Healthier Hospitals by Design 1.0

**DESIGNTEX**

**Ideal for healthcare and other environments  
following HHI guidelines**

100,000+ Abrasion  
Bleach Treatable  
No Antimicrobials  
No Flame Retardants  
No Formaldehyde  
No PFAS Stain Resistant Finishes  
No PVC

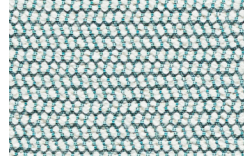
 MODUFORM



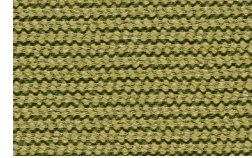
**Pause Canvas**  
3854-101



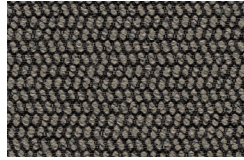
**Greige**  
3854-102



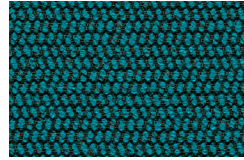
**Whitewater**  
3854-401



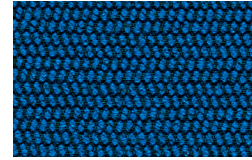
**Kelp**  
3854-501



**Forge**  
3854-801



**Turquoise**  
3854-403



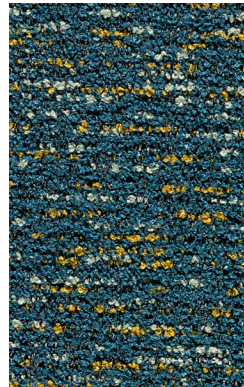
**Cobalt**  
3854-404



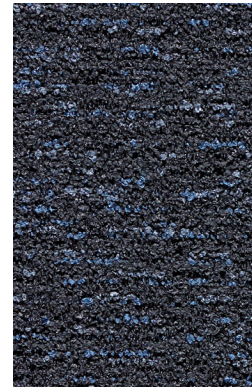
**Dapple Shoji**  
3937-103



**Pewter**  
3937-802



**Canal**  
3937-403



**Indigo**  
3937-405



**Sail Cocoon**  
3909-101



**Canal**  
3909-401



**Linnen Seraph**  
3921-802



**Malt**  
3921-803



**Bisque**  
3921-105



**Olive**  
3921-502



**Geyser**  
3921-401



**Salt Water**  
3921-404



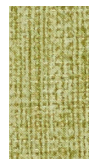
**Stone**  
3921-804



**Seedling**  
3921-103



**Sundown**  
3921-701



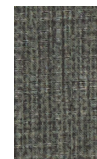
**Wasabi**  
3921-501



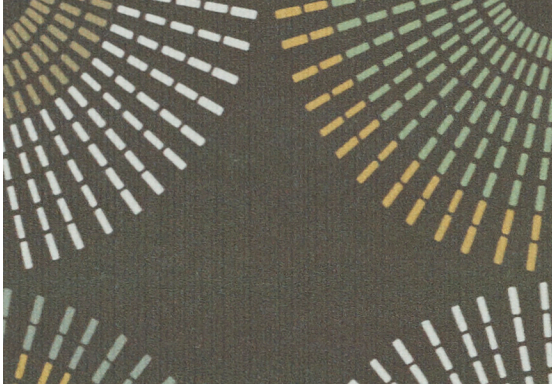
**Neptune**  
3921-403



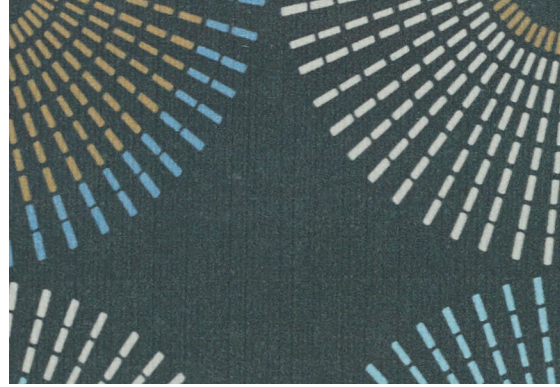
**Oceania**  
3921-406



**Charcoal**  
3921-805



**Lumi Marsh**  
3901-102



**Forge**  
3901-802



**Silicone Element Mortar**  
3919-102



**Skyscraper**  
3919-104



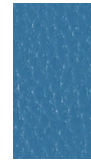
**Chamomile**  
3919-202



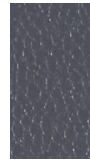
**Apple**  
3919-502



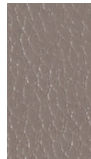
**Isle**  
3919-403



**Slate**  
3919-406



**Saville**  
3919-808



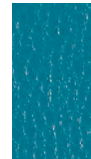
**Alloy**  
3919-108



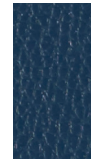
**Latte**  
3919-105



**Seastone**  
3919-806



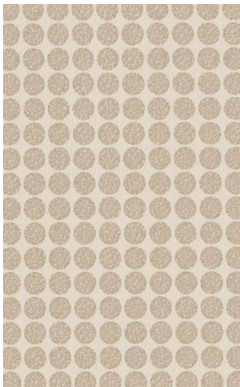
**Azure**  
3919-404



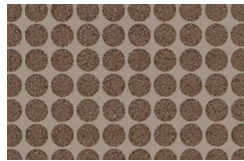
**Amazon**  
3919-411



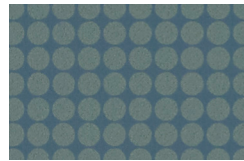
**Rolling Stone**  
3919-807



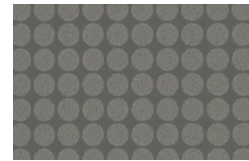
**Big Dot Moon**  
3525-801



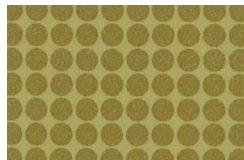
**Sable**  
3525-101



**Lake**  
3525-401



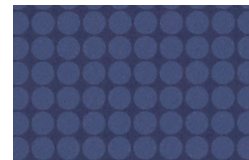
**Smoke**  
3525-803



**Cactus**  
3525-501



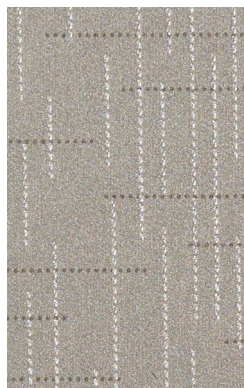
**Azure**  
3525-402



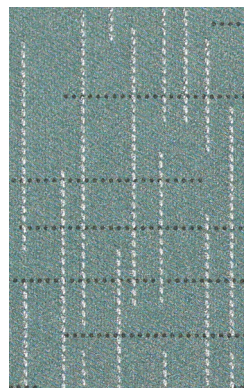
**Indigo**  
3525-403



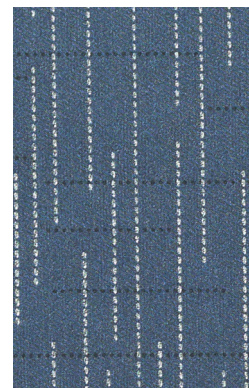
**Rainwater Sandstone**  
3837-101



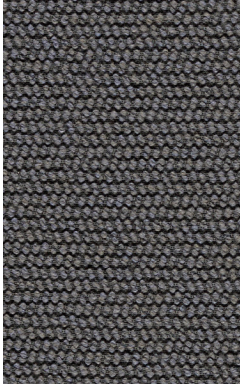
**Nickel**  
3837-801



**Polaris**  
3837-401



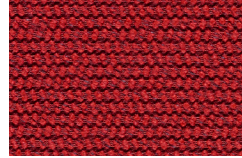
**Indigo**  
3837-403



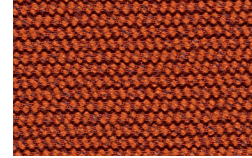
**Pause Stone**  
3854-802



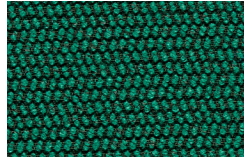
**Charcoal**  
3854-803



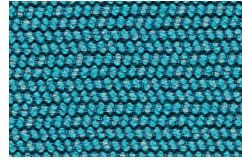
**Heat**  
3854-302



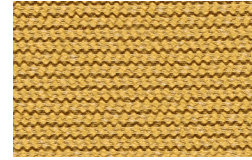
**Satsuma**  
3854-701



**Mallard**  
3854-502



**Pool**  
3854-402



**Glow**  
3854-201



**Tilt Slate**  
3001-801



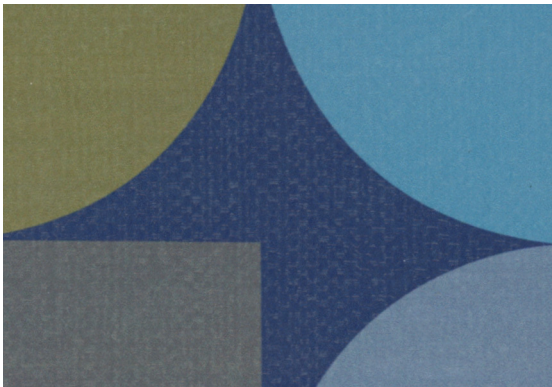
**Oceania**  
3001-402



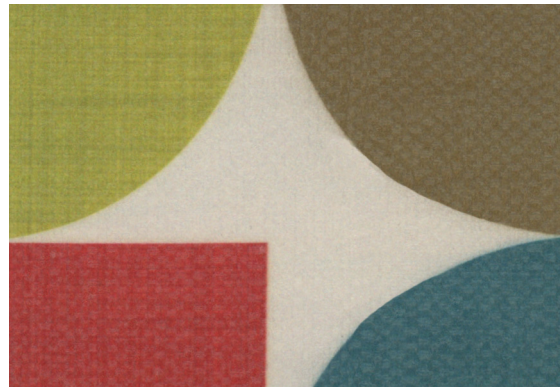
**Verdigris**  
3001-401



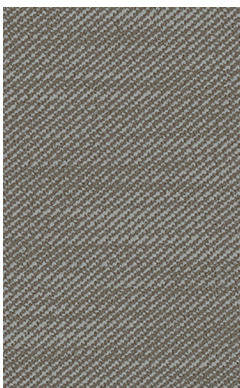
**Peacock**  
3001-902



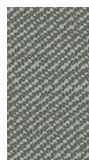
**Sail Blueprint**  
3909-402



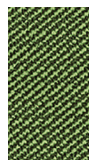
**Colorwheel**  
3909-901



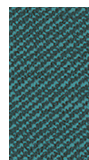
**Nest Stone**  
3011-802



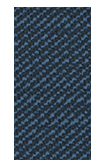
**Mist**  
3011-401



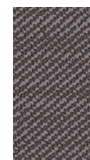
**Lime**  
3011-503



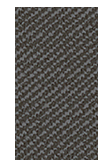
**Pesca**  
3011-402



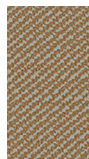
**Lapis**  
3011-403



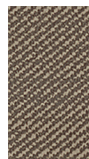
**Lilac Gray**  
3011-601



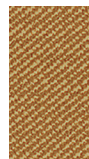
**White Charcoal**  
3011-803



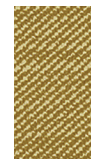
**Oat**  
3011-102



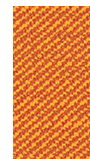
**Mica**  
3011-103



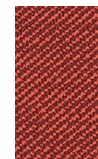
**Plantain**  
3011-201



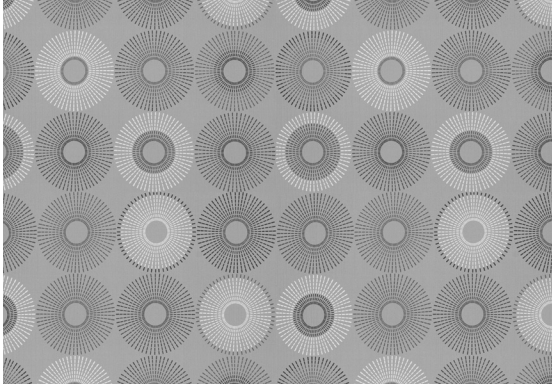
**Avocado**  
3011-501



**Grove**  
3011-701

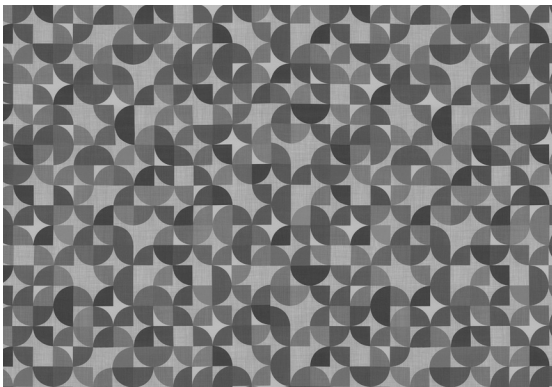


**Red Clay**  
3011-302



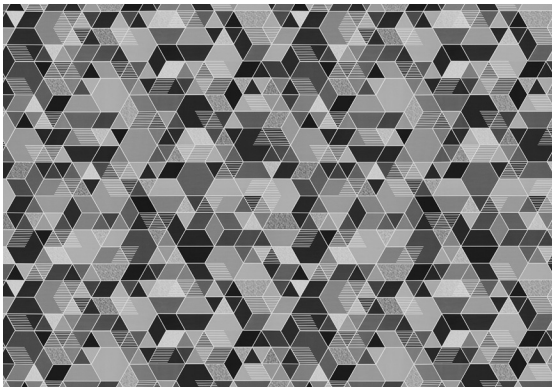
**Lumi 3901**

Repeat: V 13.25 inches x H 13.25 inches (V 33.7 cm x H 33.7 cm)



**Sail 3909**

Repeat: V 26.75 inches x H 26.25 inches (V 67.9 cm x H 66.7 cm)



**Tilt 3001**

Repeat: V 24.25 inches x H 25 inches (V 61.6 cm x H 63.5 cm)

# Healthier Hospitals by Design 1.0

Style Name	Style #	Content	Finish	Cleaning	Width	Repeat	Abrasion	Denim Dye Resistant	Ink Resistant
Big Dot	3525	100% Polyurethane (Polycarbonate Based)	Advanced Protective Topcoat	WS Bleach (4:1)	54 inches (137 cm)	None	100,000 Wyzenbeek double rubs (WS)	•	
Dapple	3937	100% Polyester	None	WS Bleach (10:1)	56 inches (142 cm)	None	100,000 Wyzenbeek double rubs (CD)		
Linnen	3921	100% Polyurethane (Polycarbonate Based)	Advanced Protective Topcoat	WS Bleach (4:1)	54 inches (137 cm)	None	500,000 Wyzenbeek double rubs (CD)	•	•
Lumi	3901	100% Polyurethane (Polycarbonate Based)	Advanced Protective Topcoat	WS Bleach (10:1)	54 inches (137 cm)	V 13.25" x H 13.25"	800,000 Wyzenbeek double rubs (CD)	•	•
Nest	3011	Polyurethane (EPU, Polycarbonate Based)	Crypton Epure	WS Bleach (10:1)	54 inches (137 cm)	None	1,000,000 Wyzenbeek double rubs (CD)	•	•
Pause	3854	100% Polyester (Postconsumer Recycled, Solution Dyed)	None	WS Bleach (10:1)	54 inches (137 cm)	None	200,000 Wyzenbeek double rubs (CD)		
Rainwater	3837	100% Polyurethane (Polycarbonate Based)	Advanced Protective Topcoat	WS Bleach (4:1)	54 inches (137 cm)	None	725,000 Wyzenbeek double rubs (CD)	•	•
Sail	3909	100% Polyurethane (Polycarbonate Based)	Advanced Protective Topcoat	WS Bleach (10:1)	54 inches (137 cm)	V 26.75" x H 26.25"	800,000 Wyzenbeek double rubs (CD)	•	•
Silicone Element	3919	100% Silicone	None	WS Bleach (4:1)	55 inches (140 cm)	None	200,000 Wyzenbeek double rubs (WS)	•	•
Tilt	3001	100% Polyurethane (EPU, Polycarbonate Based)	Crypton Epure	WS Bleach (10:1)	54 inches (137 cm)	V 24.25" x H 25"	1,000,000 Wyzenbeek double rubs (CD)	•	•

Meets or exceeds these ACT performance standards:



Additional colorways available  
For samples please call 800.221.1540

#### Advanced Protective Topcoat

Advanced Protective Topcoat is a PFOA-free, stain-resistant high-performance topcoat intended for all environments, including extreme-condition installations such as hospitality, healthcare, and education. This topcoat provides easier maintenance for the coated upholstery.

#### Cleaning Codes

**Bleach** Treatable with a 4:1 or 10:1 water-to-bleach dilution for the lifetime of the product.

**WS** Clean only with water-based or solvent-based cleaner. Do not saturate.

For regular maintenance of coated fabrics, always rinse the cleaned and/or disinfected area(s) with fresh water. Wipe dry and repeat if necessary.

#### Bleach and Disinfectant Testing

All products have been tested with bleach (sodium hypochlorite) and/or a variety of disinfectants (alcohol, hydrogen peroxide, quaternary ammonium). Scan the QR code below for specific test results.

#### Abrasion

Abrasion has been tested with the Wyzenbeek method using either cotton duck (CD) or wire screen (WS) as the abrasant, or the Martindale method using worsted wool as the abrasant. ACT guidelines require at least 30,000 Wyzenbeek double rubs or 40,000 Martindale cycles for woven upholsteries, or 50,000 Wyzenbeek double rubs for coated upholsteries in heavy duty single-shift application. Multiple factors affect fabric durability and appearance retention, including end-user application and proper maintenance. Abrasion test results exceeding ACT Performance Guidelines are not an indicator of product lifespan.



172 Industrial Road  
Fitchburg, MA 01420  
(800) 221-6638  
www.moduform.com

Scan code with smartphone camera for additional resources and product information

