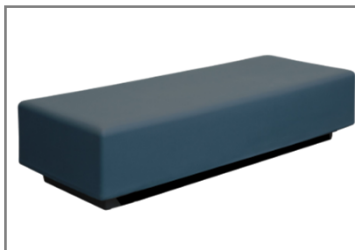




450-11 Secure Seclusion Bed Pictured

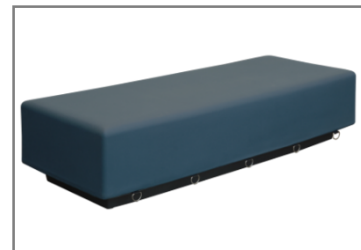
In circumstances where seclusion or restraint become necessary, Moduform's seclusion beds have been designed with consideration for both patient and staff safety. Beds were engineered to comply with Life Safety Codes, withstand constant heavy-use and severe handling, prevent serious injury and be easily cleaned and maintained to help in the fight of harmful bacteria and bloodborne pathogens. There are no frames, no springs, no seams, no puddling of material and no hard surfaces. The union of the one-piece, integral shaped high density foam core fused to the 200 mil polyvinyl skin enables each piece to meet the needs of uncompromising environments. Impervious to fluids, the seamless, pick and puncture resistant polyvinyl skin is mechanically fastened and gasketed to a rotationally molded, high-impact polyethylene base. Anchoring kits can be ordered that allow for maintainers to quickly detach the unit for cleaning. Secure 450-11 beds feature 10 restraint rings per bed. Weighing more than 200 pounds, it's simple, durable, dependable and safe design make it the leader seclusion room solutions.



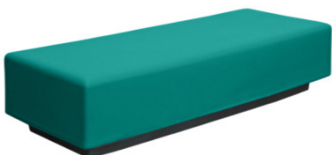
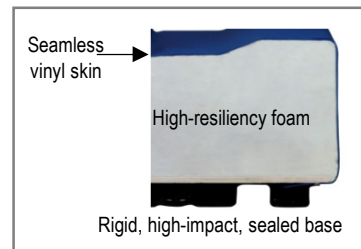
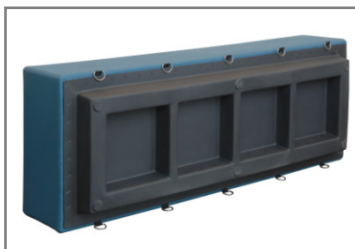
450-10
30"d x 80"w x 14"h



520-H-026860
Floor mounting hardware



450-11
30"d x 80"w x 14"h





Sky
210



Plum
215



Leaf
220



Splash
225



Canyon
230



Burgundy
318



Huckleberry
403



Slate Blue
426



Sandstream
700



Flannel Grey
845



Black
900

Colors are digital representations and may not exactly match actual product. Color chips are available upon request.

Standard Features:

- Grade 7 is 200 mils thick
- Rotationally molded seamless vinyl that is pick, puncture and scratch resistant
- Roto vinyl is seamless without springs, frames, exposed edges or hard surfaces
- Easily cleaned with steam, bleach-based and other detergents
- Polyvinyl Chloride is fully pigmented resulting in homogeneous color
- Interior is pressure molded, high-resiliency, flexible foam
- Base is rigid, high-impact plastic with perimeter gasket
- Meets Cal TB 133