



SF8001 University Chair with Shelf | BG8509 Dalton Bench

Collaborative learning environments require flexible seating to accommodate the teaching and learning process of active engagement. University combines the comfort of a lounge chair with the functional options of tablet arms, cup holders, casters for ease of movement and storage for personal items. Combine University with Dalton modular benches or Julia curves to improve the efficiency of the space and create additional opportunities for engagement.



SF8301



SF8201



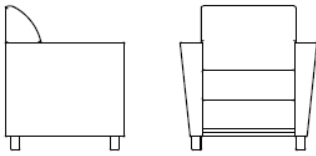
SF8001

University's frame components are machined into puzzle like pieces on state-of-the-art CNC equipment to within the tightest of tolerances. During the assembly process, these components lock together while commercial adhesives and mechanical fasteners are introduced to further enhance the construction. This process results in the most durable, robust and stable foundation from which to build upholstered furniture. Sinuous wire springs are added, tied together and connected to tape lined clips which prevent squeaking. This improves the longevity and overall strength. Foam is commercial grade for comfort and resiliency. Fabric is upholstered to the frame with precision for a tailored fit and finish.

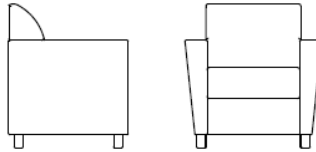


SF8202

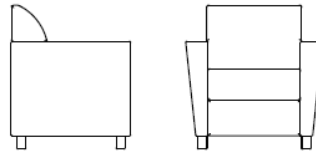




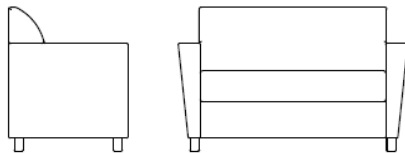
SF8001 University Chair w/Shelf
27"d x 31"w x 33.5"h
24.5" arm ht 19" seat ht



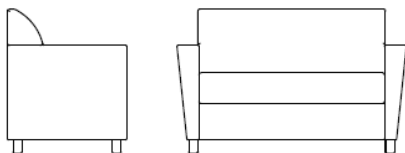
SF8201 University Chair, Open Front
27"d x 31"w x 33.5"h
24.5" arm ht 19" seat ht



SF8301 University Chair, Closed Front
27"d x 31"w x 33.5"h
24.5" arm ht 19" seat ht



SF8202 University Loveseat, Open Front
27"d x 52"w x 33.5"h
24.5" arm ht 19" seat ht



SF8302 University Loveseat, Closed Front
27"d x 52"w x 33.5"h
24.5" arm ht 19" seat ht

Standard Features:

- Hardwood engineered plywood frame components; puzzle cut
- Arched, sinuous wire springs
- Polyester fiber wrap for added comfort
- Lined spring clips to prevent squeaking
- 3" Thick foam seat cushion
- Non-removable cushion
- Double needle stitching
- SF8001 shelf is 3/4" black HPL
- Wood cylinder leg: Standard finishes
Natural, Light Cherry,
Cherry, Dark Mocha, Stone

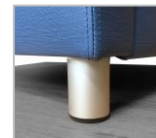
Options:

- Cal 133 compliance
- Moisture barrier for seat
- Double needle stitching
- Contrast stitching (with double needle only)
- Motion package with handle, (2) casters and (2) legs
- (4) Casters
- Metal legs in black or silver
- Tablet arm
- Cup holder
- (2) Fabrics

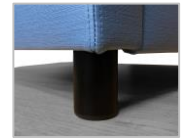
Coordinating wood tables and chairs available



Wood Cylinder Leg



Metal Cylinder Leg | Silver



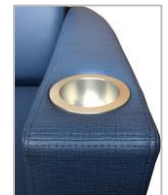
Metal Cylinder Leg | Black



Casters



Handle | Motion Package



Cup Holder

