

Casegoods Collections



INTRODUCTION

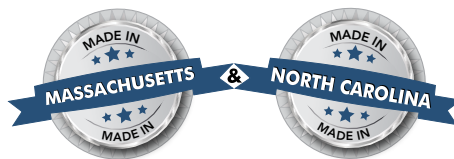
When you select furniture manufactured by ModuForm, you're investing in products that have been designed, engineered and built to be durable, attractive and comfortable. We have been providing high-quality furniture for learning, living, healing and collaborative spaces since 1976. Throughout our history, we have taken great pride in how our products withstand the disorder commonly found in unpredictable environments. Today is no different. ModuForm's unique collection of casegoods have been designed to answer the problems our customers experience. This is our heritage and how we have grown from humble beginnings into 160,000 square feet of state-of-the-art manufacturing space.

All ModuForm furniture is designed using high-end three-dimensional modeling software that interfaces with computer-aided machining programs, ensuring tight tolerances and an exceptional fit. This technology assures your furniture is built accurately, efficiently and to the highest quality standards. Our revolutionary and unique UV cured resin finish material is both the eco-friendliest available and most resilient

against abrasions, temperature, heavy-duty cleaners and disinfectants, bleach, most food and beverage and other challenges found in healthcare and education facilities. Finally, cabinets are assembled in automated, through-feed assembly clamps to make sure all joinery is square, drawers and doors open smoothly, and the overall piece is exceptional.

Our team of experienced and highly-trained sales professionals and customer service representatives can help you select the appropriate collection to meet the unique challenges you face. Whether you are creating living spaces for student residence halls and want reconfigurable and easy to move furniture for students to enjoy, or healing environments for those who need furniture that reflect a level of compassion and vigilance for their welfare, we're here for you.

Thumb through the next several pages, visit our website at www.moduform.com, or give us a call at 800.221.6638.



CASEGOODS AT A GLANCE



3
TRANSITIONS



5
FORTRESS



7
PASSAGES



9
FIT



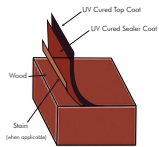
11
ROOMMATE



13
LOWELL



15
EVEREST



16
FINISHING
TECHNOLOGY



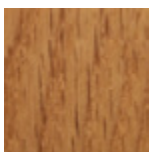
17
INTRO TO LOUNGE
FURNITURE



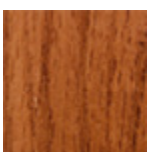
TRANSITIONS Serves to support therapy objectives and improve environmental quality.

ModuForm offers an array of standard wood finishes.

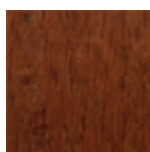
Digital images are supplied for reference and may differ from actual due to screen settings, textures and patterns.



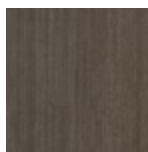
Natural Oak



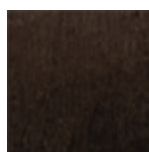
Light Cherry



Cherry



Stone



Dark Mocha



Natural Maple

TRANSITIONS

Key Features



TR4B | Dresser



TR5-2O | Nightstand



TR6ST2 | Slope Top



TR6ST1 | Slope Top



TR9SF | Concealed Steel Framed Platform Bed

Transitions bedroom furniture serves to support therapy objectives and improve environmental quality.

Laminate tops are durable and easy to clean while all wood components are finished using our revolutionary ultraviolet (UV) cured coating. This top coat will resist scratches, heat, UV light, bodily fluids and the heavy strength detergents meant to keep your facility clean against harmful bacteria and bloodborne pathogens.

The natural red oak wood grain offers a warm and homelike feel that reflects a level of compassion and vigilance for patient welfare. Its ligature resistant design will help to provide a level of safety and security to promote empowerment, hope and quality of life.

All cabinets are built using the latest technology in cabinet construction ensuring the highest level of quality and performance suitable for the care, treatment and services provided.

STANDARD FEATURES

- * Slope Tops for Easy Cleaning and Safety
- * Shelves are Recessed to Discourage Climbing
- * Dowels and Toe Bore for Added Strength
- * Oak Veneer Hardwood Panels
- * High Pressure Laminate Tops
- * High-Impact 3MM Edge Band
- * Concealed Floor & Wall Mounting
- * Internal Steel Frame Beds for Security
- * UV Cured Resin Finish



FORTRESS

Designed to create humanizing living conditions in demanding environments.



FR9SF | Concealed Steel Framed Platform Bed

Fortress

Key Features



FR6STD-6O | Slope Top Cabinet



FR6STD-8O | Slope Top Cabinet



FR6STS-4O | Slope Top Cabinet



FR4B | Dresser



FR4A | Dresser



FR5-3O | Nightstand



FR5-2O | Nightstand

Designed to create humanizing living conditions in demanding environments. Fortress features solid oak panels and robust construction. It is safe, secure and suitable for the care, treatment and services provided. Slope tops offer safety to patients and staff by providing clear lines of sight and a clean fit for secure wall attachment. Shelves are inset making climbing difficult and the integrated internal sub-top (see image below) reduces areas for contraband. Steel framed beds leveraging tamper-proof metal to metal joints are incredibly durable, while the higher platform deck makes for easy in and out. All wood components feature ModuForm's revolutionary UV cured resin finish that will withstand bleach-based cleaners and other heavy strength disinfectants to aid in the control of bloodborne pathogens and harmful bacteria. Fortress will help to maintain a safe environment that reflects a level of compassion and vigilance for patient welfare. Its ligature resistant design assists in providing a level of safety and security to promote empowerment, hope and quality of life.

STANDARD FEATURES

- * Slope Tops for Easy Cleaning and Safety
- * Inaccessible Access to Inside of Slope for Security
- * Slope Top Rear Edge is Chamfered to Prevent Space Between Cabinet and Wall
- * Shelves are Recessed to Discourage Climbing
- * Dowels and Toe Bore for Added Strength
- * Solid Oak Panels
- * Concealed Floor & Wall Mounting
- * Internal Steel Frame Beds for Security
- * Higher Bed Deck for easier ingress and egress
- * UV Cured Resin Finish



Inaccessible Access to Inside of Slope for Security

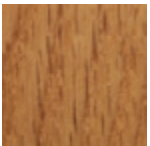


PASSAGES

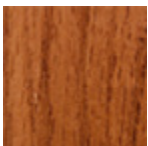
Provides an inviting, calm and safe environment where treatment and healing take place.

ModuForm offers an array of standard wood finishes.

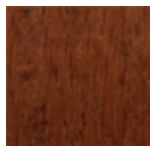
Digital images are supplied for reference and may differ from actual due to screen settings, textures and patterns.



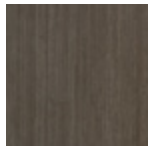
Natural Oak



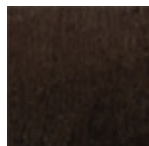
Light Cherry



Cherry



Stone



Dark Mocha



Natural Maple

PASSAGES

Key Features

When you are creating interior spaces to meet the needs of the patient population while providing furniture that is safe and suitable to the care, treatment and services provided, Passages is the solution. Its solid red oak panels are cheerful and less threatening while its storage capabilities allow for the display of objects that reflect meaningful memories. The furniture is easily maintained and cleaned with all wood components featuring our revolutionary UV cured coating that is specially formulated to withstand bleach-based cleaners and other heavy strength disinfectants to aid in the control of bloodborne pathogens and harmful bacteria. With an array of beds, dressers, nightstands and wardrobes, Passages will help to provide an inviting, calm and safe environment where treatment and healing take place.

STANDARD FEATURES

- * Full-Length 270° Piano Hinges
- * Full Length Finger Bevel on Drawer Fronts
- * Solid Oak Panels and Drawer Fronts
- * Equal Size Drawers for Maximum Storage
- * High Pressure Laminate Tops with High-Impact 3MM Edge Banding
- * Wood Eyelid Pulls
- * J-Bar Clothes Hanging
- * Vented Back Panel on Dressers and Nightstands
- * Drawer Liner Available on Select Models
- * Restricted Drawer Removal
- * Surface Mounted Restraint Rails on Select Models
- * Rounded Edged on Outside of Side Panels
- * UV Cured Resin Finish



PS5B-3D | Nightstand



PS4B | Dresser



PS908NDR | Restraint Bed



PS908ND | Platform Bed





FIT Flexible, durable and provides unmatched value.



FIT6C2 | Wardrobe



FIT6C2-1D | Wardrobe



FIT6C1 | Wardrobe



FIT6C1-1D | Wardrobe



FIT6B -1D | Wardrobe



FIT6B | Wardrobe



FIT3A-3D | Pedestal Desk



FIT3A-1D2O | Pedestal Desk



FIT3YNP | Writing Desk



FIT5B-1D | Nightstand



FIT5B-3D | Nightstand



FIT5A-1D | Nightstand



FIT5A-2D | Nightstand



FIT3MP-2D | Mobile Pedestal



FIT4C | Dresser



FIT4B | Dresser



FIT4A | Dresser



FIT4Y | Dresser

FIT

Key Features

FIT is flexible, durable and provides unmatched value. Select veneers are utilized to create a warm and inviting environment while providing for a durable foundation to withstand daily use. With an array of beds, wardrobes, desks, dressers and nightstands, FIT is extremely adaptable to any space. All wood surfaces are finished using ModuForm's revolutionary UV cured resin which will withstand harsh bleach-based cleaners and heavy-strength detergents. FIT's design will create home-like spaces while its construction is engineered to last.

STANDARD FEATURES

- * Oak Veneers
- * 96MM Hardware
- * Equal Size Drawers for Maximum Storage
- * High Pressure Laminate Top
- * High-Impact Edge Band
- * 270° 5-Knuckle Hinges
- * UV Cured Resin Finish



ROOMMATE

Solid oak composition and robust construction.



RM6C
Wardrobe



RM6C2-1D
Wardrobe



RM6C1
Wardrobe



RM6C1-1D
Wardrobe



RM6A
Wardrobe



RM6B
Wardrobe



RM6B-1
Wardrobe

ROOMMATE

Key Features

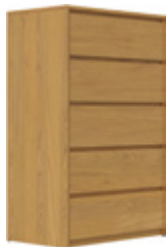
ModuForm's most flexible and adaptable collection of bedroom furniture. With its solid oak composition and robust construction, Roommate will withstand the daily rigors of active environments. Personalize cabinets with an array of options or utilize the standard features to provide residents with plentiful storage and unrivaled comfort. Finished with ModuForm's revolutionary UV cured resin to withstand the rigors of bleach-based cleaners and harsh detergents, Roommate will provide years of worry-free service.

STANDARD FEATURES

- * 270° 5-Knuckle Hinges
- * Full Length Finger Bevel on Drawer Fronts
- * Solid Oak Panels and Drawer Fronts
- * Equal Size Drawers for Maximum Storage
- * High Pressure Laminate Tops with High-Impact 3MM Edge Banding
- * High-Impact Edge Band
- * Tool-Less Lofting Beds
- * Bolt-On Bunk Beds
- * Deep Selection of Options and Models
- * UV Cured Resin Finish



RMB54 | Double Bed
(Twin & Queen Available)



RM4C-18 | Dresser



RM4B-18 | Dresser



RM4A-24 | Dresser



RM4SC-24
Dresser



RM3MP
Mobile Pedestal



RM5B-3D
Nightstand



RM5A-2D
Nightstand



RM5A-1D
Nightstand



RM3A | Pedestal Desk



RM3ANP | Writing Desk



RM3AWT | Writing Table



RM3AWT2 | Writing Table



RM18
Twin Bed Spring Deck



959BTRM1
Bunkable Bed Bolt On Spring



959BTRM-L
Low Loft Bed Bolt On Spring



959TPRM-L-IP
Low Loft Bed Track Lock



959HL-L-SP
Low Loft Bed Hook Lock



959BTRM
Bunk Bed Bolt On Spring



959HL-H
High Loft Bed Hook Lock



959TPRM-H
High Loft Bed Track Lock



959TPRM-IP | Lofted Bed
Track Lock | Stacked



LOWELL

A residential aesthetic to demanding spaces.



GL6C2 | Wardrobe



GL6C2-1D | Wardrobe



GL6B | Wardrobe

LOWELL

Key Features



G9-3D | Bed

Lowell offers a residential aesthetic to demanding spaces. The post and panel design accentuates the chamfered edges and integrated crescent shape drawer pulls. With an abundance of storage options and home-like features, the traditional and time-tested craftsmanship is apparent in each piece. Even the most sparse environments will be transformed into welcoming and warm bedrooms when choosing the Lowell collection.

STANDARD FEATURES

- * Post and Panel Sides
- * Solid Oak Posts & Oak Veneer Panel
- * Solid Oak Drawer Fronts
- * Integrated Crescent Shape Drawer Pull
- * Equal Size Drawers for Maximum Storage
- * High Pressure Laminate Tops with High-Impact 3MM Edge Banding
- * Deep Selection of Options and Models
- * UV Cured Resin Finish



GL4SC | Stacking Dresser



GL5B-3D | Nightstand



GL5A-2D | Nightstand



GL5A-1D | Nightstand



GL4C | Dresser



GL4B | Dresser



GL4A | Dresser



GL4D | Dresser



GL18-54 | Bed



GL9-ND | Bed



GL10TV60 | TV Stand

EVEREST

Key Features



EV6B

Everest blends flexible design with durable construction. From residence halls to transitional spaces, Everest offers the necessary features to withstand constant use. The solid oak drawer fronts are dovetailed to the sides while the beautiful oak veneer panels are joined with dowels and pocket screws. All cabinets are pressed together with state-of-the-art electromagnetic clamps that ensure the fit and finish is impeccable.

All wood components are finished using ModuForm's revolutionary resin sealer and top-coat; cured inside UV light booths. This wood finish is easy to maintain and resilient against bleach-based cleaners and harsh detergents. Our process is eco-friendly as there are no VOCs emitted into the environment and all finish material is transferred to the part or re-used.

STANDARD FEATURES

- * Full Length Finger Bevel on Drawer Fronts
- * Oak Veneer Panels with Hardwood Core
- * Equal Size Drawers for Maximum Storage
- * High Pressure Laminate Tops with High-Impact 3MM Edge Banding
- * Deep Selection of Options and Models
- * 100% Resin Sealer & Top-Coat Cured with UV Light
- * Green Process – No VOCs Emitted in Finishing Process



EV4C-18



EV4A-24



EV5B-1D

UV CURED RESIN FINISH



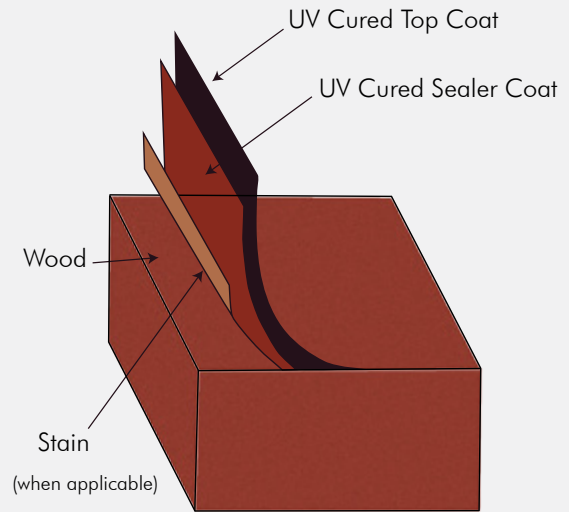
Why ModuForm's finishing technology is the best available:

FLAT LINE SYSTEM

Our conveyor fed system is continuously moving parts under roll coat applicators where specially formulated sealer and top coat resin finish material is pressure transferred from an applicator to the wood surface. This ensures that 100% of the part face receives 100% solids-based finish. This is the most durable and environmentally friendly process available.

Once parts are coated with resin, they are instantly cured under unique UV lamps. This hardens the finish so that it is impervious to discoloration, most food and beverage stains, abrasions from paper, books and writing instruments and is tough enough to withstand harsh cleaning solvents and even nail polish remover! It is chemically inert, eco-friendly and nearly invulnerable.

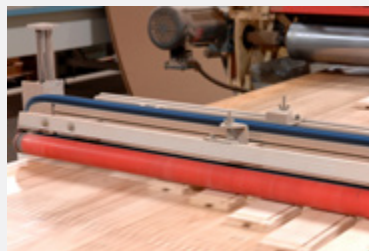
Our revolutionary and specially formulated UV Cured Resin is a perfect example of our dedication to protecting the environment while providing our customers with the most durable and highest quality products.



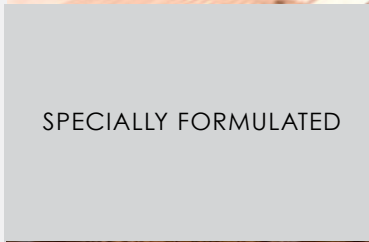
THE UV DIFFERENCE

Conventional wood finishes such as urethanes, varnishes and lacquers are about 90% solvent based and require air drying. Therefore, approximately 90% of the finish evaporates into the atmosphere meaning only about 10% stays on the part. This makes it far less durable for you and much more harmful to the environment!

The ModuForm finishing material is 100% solids-based and is applied using a pressure process with a roll coat applicator. This means that nothing evaporates, and we transfer 100% of the resin-based material to the part. Anything left over is reclaimed and applied to the next piece in line. This can make ModuForm's finish more than 250% more durable than others.



REVOLUTIONARY



SPECIALLY FORMULATED



ECO-FRIENDLY

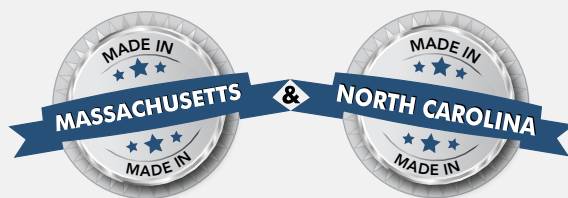


LOUNGE FURNITURE

ModuForm has a rich history of manufacturing seating. Our Connelly Springs, NC factory is dedicated to the design and production of our Adden line of fully upholstered lounge seating. We cut and assemble our frames, stitch the fabric and upholster each piece. Our seating is finely tailored and incredibly durable. Wood sided and molded products are produced in our Fitchburg, MA factory and have been for more than 40 years. Rotationally molding products have been at the core of our business since its inception. Molded lounge is seamless and sealed and meets the stringent needs of our most intensive use customers. In all, ModuForm offers seating that will solve the challenges faced in high traffic spaces no matter the environment. Whether you are looking to add fully upholstered seating to a collaborative learning environment, pieces with replaceable covers, or molded products for more intensive applications we can help.



Casegoods Collections



 **MODUFORM**