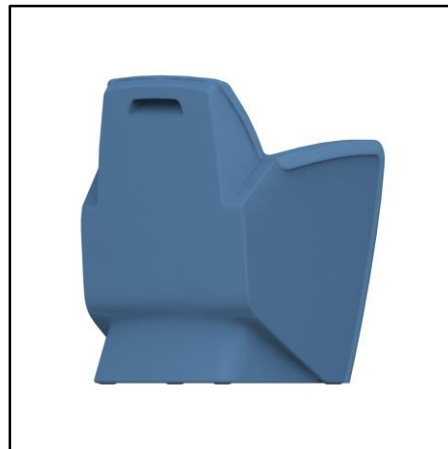
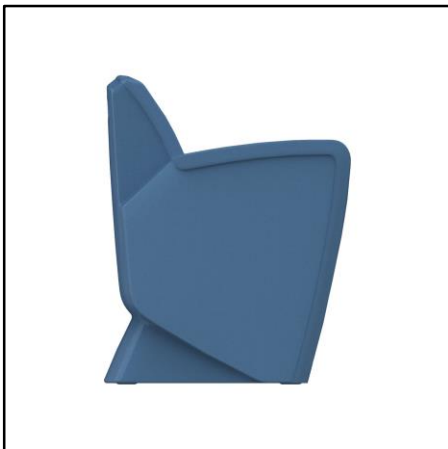




50-702 ModuMaxx Armchair | 5000-542S & 5000-542R ModuMaxx X-Base Tables



50-702
26"d x 26"w x 33"h
17.75" seat height | 26" arm height

Moduform's 5000 series collection of modular seating is perfect for environments that need:

- Ligature resistance
- Chairs that can be weighted with ballasting material when needed
- Ease of maintenance and cleanability
- Contraband resistance
- Fluid, puncture and scratch resilient
- Seamless and high-impact
- Modular design that can be arranged into different groupings
- Environmentally friendly - Certified green

50-702 is a seamless and sealed polyethylene armchair that is resistant to kicking, scratching, fluids, moisture and ligature. There are no frames, no springs and no sharp edges. This offers greater comfort, safety, security and the ability to clean with steam, mild detergents or bleach-based cleaners that aid in the control of blood borne pathogens. The chair can be weighted with additional ballasting material if necessary.



50-701 Armless Chair

Colors are digital representations and may not exactly match actual product. Color chips are available upon request.





Slate Blue
426



Surf
445



Celtic
525



Grape
360



Shade
902



Burgundy
318



Black
901

Rigid, High-Impact
& Sealed



Seamless
Polyethylene Surface

Hollow – Allows
for Ballasting



Optional &
Secure Access
Panel for Adding
Weight. Tamper
Proof Hardware