

Healthcare by Design

DESIGNTEX

**Ideal for healthcare or other
high traffic/high abuse environments**

100,000+ Abrasion
Bleach Treatable
Stain Resistant

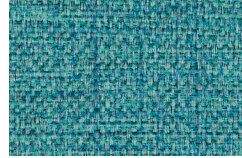
 **MODUFORM**



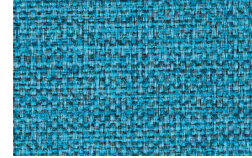
Trove Salt Water
3839-104



Patina
3839-401



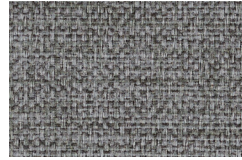
Bayou
3839-402



Starlight
3839-403



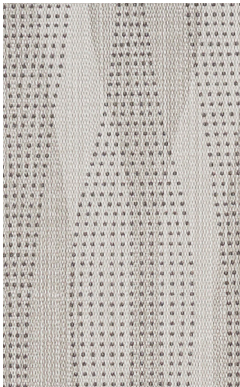
Seraph
3839-102



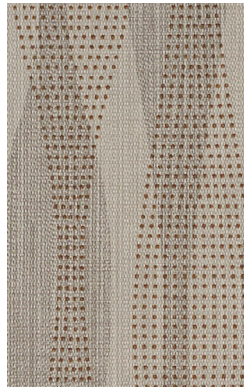
Shadow
3839-801



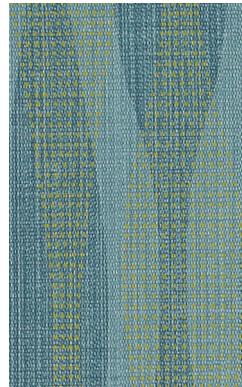
Charcoal
3839-802



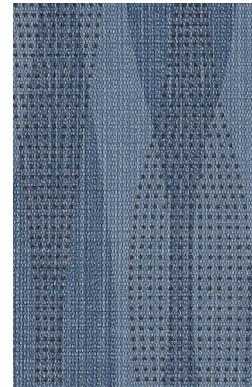
Current Mist
3599-801



Seashell
3599-101



Aqua
3599-401



Navy
3599-403



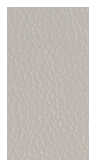
Queue Concrete
3811-802



Tidal
3811-401



Sorano Pale Aqua
3403-408



Smoky
3403-804



Quarry
3403-104



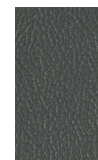
Chervil
3403-504



Azure
3403-404



Paradise
3403-403



Keystone
3403-802



Grey
3403-806



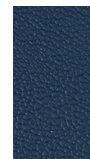
Shale
3403-801



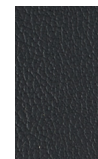
Aloe
3403-505



Sprite
3403-407



Huron
3403-406



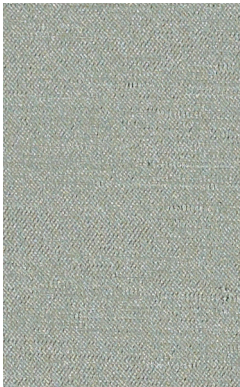
Licorice
3403-803



Ink Serene
3773-402



Alloy
3773-801



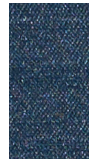
Rise Sky
3809-401



Cloud
3809-802



Turquoise
3809-402



True Blue
3809-404



Chamois
3809-201



Nickel
3809-102



Steel
3809-803



Mica
3809-101



Pool
3809-403



Clematis
3809-601



Chartreuse
3809-501



Carob
3809-104



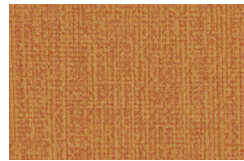
Gunmetal
3809-804



Alphabet Mica
3877-803



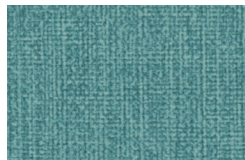
Indigo
3877-409



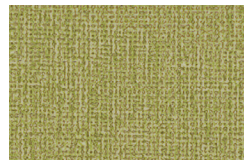
Apricot
3877-701



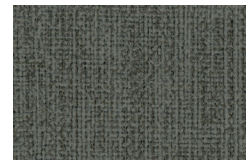
Fog
3877-801



Mediterranean
3877-401



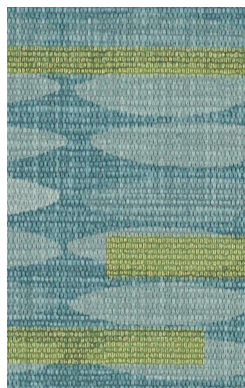
Pistachio
3877-501



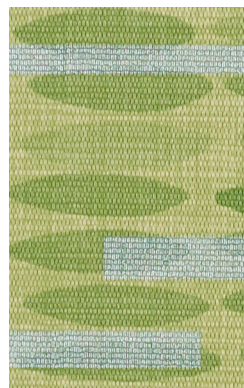
Iron
3877-802



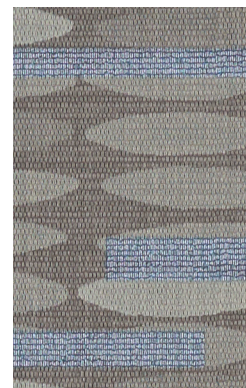
Leap Arctic
3600-101



Tide Pool
3600-402



Lily Pad
3600-502



Steel
3600-801

Healthcare by Design

| Style Name | Style # | Content | Finish | Cleaning | Width | Repeat | Abrasion | Denim Resistant | Dye Resistant | Ink Resistant |
|------------|---------|--|--------------------------------|---------------------|-----------------------|-----------------------|--------------------------------------|-----------------|---------------|---------------|
| Alphabet | 3877 | 100% Vinyl (without Harmful Phthalates) | Advanced Protective Topcoat | WS Bleach (10:1) | 54 inches (137 cm) | None | 1,000,000 Wyzenbeek double rubs (WS) | • | | • |
| Current | 3599 | 100% Vinyl | Advanced Protective Topcoat | WS Bleach (10:1) | 54 inches (137 cm) | V 6" x H 6.75" | 100,000 Wyzenbeek double rubs (WS) | | | • |
| Ink | 3773 | 76% Polyester, 17% Nylon (Solution Dyed), 7% Polyester (Postconsumer Recycled) | Nanotechnology Stain Resistant | WS Bleach (10:1) | 56 inches (142 cm) | V 14" x H 15" | 100,000 Wyzenbeek double rubs (CD) | | | |
| Leap | 3600 | 100% Vinyl | Advanced Protective Topcoat | WS Bleach (10:1) | 54 inches (137 cm) | V 9" x H 6.75" | 100,000 Wyzenbeek double rubs (WS) | | | • |
| Queue | 3811 | 81% Polyester, 19% Nylon (Solution Dyed) | Nanotechnology Stain Resistant | WS Bleach (10:1) | 57 inches (145 cm) | V 8.75" x H 14.75" | 100,000 Wyzenbeek double rubs (CD) | | | |
| Rise | 3809 | 100% Vinyl | Advanced Protective Topcoat | WS Bleach (10:1) | 54 inches (137 cm) | None | 100,000 Wyzenbeek double rubs (WS) | • | | |
| Sorano | 3403 | 100% Vinyl | Advanced Protective Topcoat | WS Bleach (4:1) | 54 inches (137 cm) | None | 1,300,000 Wyzenbeek double rubs (CD) | | | |
| Trove | 3839 | 100% Vinyl (without Harmful Phthalates) | Advanced Protective Topcoat | WS Bleach (10:1) | 54 inches (137 cm) | None | 250,000 Wyzenbeek double rubs (CD) | | | |

Meets or exceeds these ACT performance standards:



Additional colorways available
For samples please call 800.221.1540

Advanced Protective Topcoat

Advanced Protective Topcoat is a PFOA-free, stain-resistant high-performance topcoat intended for all environments, including extreme-condition installations such as hospitality, healthcare, and education. This topcoat provides easier maintenance for the coated upholstery.

Nanotechnology Stain Resistant Finish

A stain resistant finish that, thanks to the light-weight nature of nanotechnology, preserves a fabric's feel. The finish also allows any bleach-treatable fabric to remain bleach cleanable. Ask your representative about our nanotechnology stain resistant finish providers.

Cleaning Codes

Bleach Treatable with a 4:1 or 10:1 water-to-bleach dilution for the lifetime of the product.

WS Clean only with water-based or solvent-based cleaner. Do not saturate.

For regular maintenance of coated fabrics, always rinse the cleaned and/or disinfected area(s) with fresh water. Wipe dry and repeat if necessary.

Bleach and Disinfectant Testing

All products have been tested with bleach (sodium hypochlorite) and/or a variety of disinfectants (alcohol, hydrogen peroxide, quaternary ammonium). Scan the QR code below for specific test results.

Abrasion

Abrasion has been tested with the Wyzenbeek method using either cotton duck (CD) or wire screen (WS) as the abrasant, or the Martindale method using worsted wool as the abrasant. ACT guidelines require at least 30,000 Wyzenbeek double rubs or 40,000 Martindale cycles for woven upholsteries, or 50,000 Wyzenbeek double rubs for coated upholsteries in heavy duty single-shift application. Multiple factors affect fabric durability and appearance retention, including end-user application and proper maintenance. Abrasion test results exceeding ACT Performance Guidelines are not an indicator of product lifespan.



172 Industrial Road
Fitchburg, MA 01420
(800) 221-6638
www.moduform.com

Scan code with smartphone camera for additional resources and product information

