

MODUESQUE LOUNGE SEATING

**MODU
FORM[®]**



MODUESQUE LOUNGE

Cushions: Fabric or Coated Materials



- Removable & Replaceable Cushions or Just Covers
- Renewable Cushions – Simply Flip Over
- Ultra High-Density Foam Core will Maintain its Shape Longer than Conventional Commercial Foam
- One-Piece Molded Foam is Most Durable
- Concealed Tubular Frame Bolts to Chair for Durability & Safety

Overview Oak Sides, Rail & Back

- Solid Oak Butcher Block Components are Tough yet add Warmth and Softer Styling
- All Pieces are Joined with Steel-On-Steel Connectors for Durability
- Cushions Bolt to Unique Internal Steel Seat Support System
- Heavy-Duty Chrome Plated, Adjustable Floor Leveling Glide
- Specially Formulated ModuV Sealer & Topcoat – Disinfect with Bleach or Other Commercial Sanitizers for a Healthier & Humane Environment

Cushions: Molded



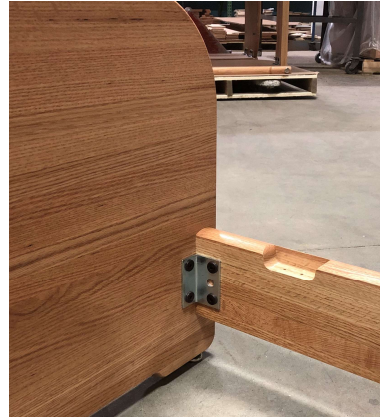
- Molded Cushions are 10X Thicker than Fabrics or Coated Materials
- Easily Clean with Commercial Detergents, Steam or Bleach-Based Agents to Maintain a Humanizing, Healthy and Safe Environment of Care
- Removable & Replaceable Cushions
- Non-Porous, Fluid, Puncture and Pick Resistant
- Seamless and Sealed Outer Cover will Outlast Any Conventional Cushion
- Fire Retardant & Self-Extinguishing for Safety
- Ultra High-Density Foam Core will Maintain its Shape Longer than Conventional Cushions
- One-Piece Molded Foam Fully Bonded to Molded Cover is Most Durable
- Concealed Internal Steel Cushion Frame Bolts to Chair for Durability & Safety



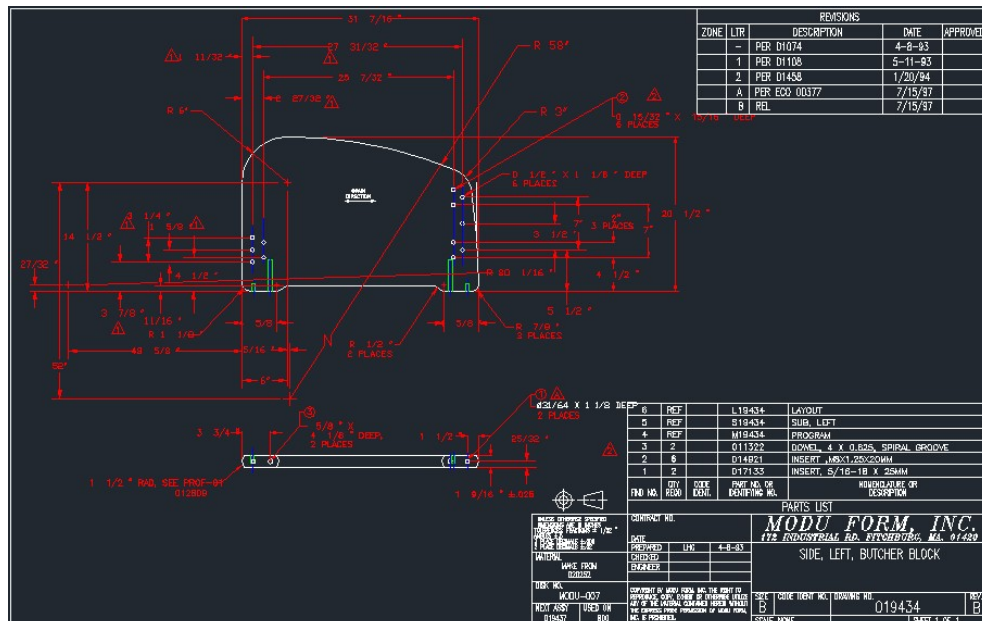
MODUESQUE LOUNGE

Frame Materials & Construction

- Solid, Northern Red Oak Butcher Block Blanks are Machined & Drilled on Computer Controlled Routers for Accuracy
- Sides Feature 1" Wide x 1-9/16" Thick Staves with Rounded Top Edges and Fronts
- Steel Threaded Inserts Driven into Sides, Back and Front Rail for Assembly
- Nickel Plated Steel Brackets and Bolts with Thread-Locking Glue Used for Connection
- Cushions Connected to Steel Support System. Frame Shall Contain Punched Holes and Welded Construction; Black Powder Coated
- All Parts are Fabricated with Inter-Changeable and Replaceable Parts and Hardware
- Heavy-Duty Chrome Plated, Adjustable Floor Leveling Glide



Cushions Bolt to Unique Internal Steel Seat Support System



MODUESQUE LOUNGE

Cushions & Attachment



Rotationally Molded Vinyl Cushion with Flexible Polyurethane Foam Core and Steel Threaded Attachment Rods

Removable and Replaceable



Fabric Covered Flexible Polyurethane Foam Core with Tubular Steel Attachment Frame

Removable, Reversible and Replaceable



MODUESQUE CHAIRS

STATEMENT OF LINE

32"d x 27.5"w x 32"h

16" Seat Height

20.5" Arm Height



810-01-1
Square Back Cushion



810-01-3
Fully Rounded Back Cushion



MODUESQUE 2 SEAT SOFA

STATEMENT OF LINE

32"d x 53.5"w x 32"h

16" Seat Height

20.5" Arm Height



810-02-1
Square Back Cushions



810-02-3
Fully Rounded Back Cushions



MODUESQUE 3 SEAT SOFA

STATEMENT OF LINE

32"d x 77"w x 32"h

16" Seat Height

20.5" Arm Height



810-03-1
Square Back
Cushions



810-03-3
Fully Rounded
Back Cushions



MODUESQUE

STATEMENT OF COLORS

Wood Finishes
Natural Oak as Shown



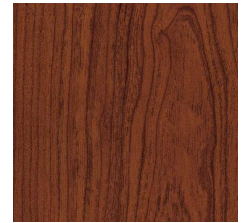
Drift - 719



Earthy - 728



Leaf - 220



Cherry



Plum - 215



Splash - 225



Slate Blue - 426



Light Cherry



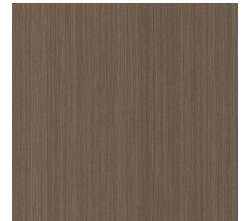
Cobalt - 404



Flannel Gray - 845



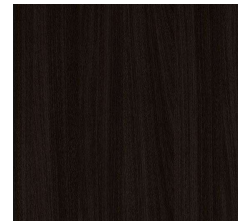
Citrus - 201



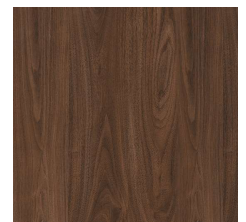
Stone



Black - 901



Dark Mocha



Walnut

MODU FORM®



MODUESQUE LOUNGE SEATING

ModuForm, Inc.
172 Industrial Road
Fitchburg, MA 01420
(978) 345-7942
moduform.com