

MODUESQUE LOUNGE SEATING

**MODU
FORM®**



MODUESQUE LOUNGE

Overview

- Solid Oak Butcher Block Components are Tough yet add Warmth and Softer Styling
- All Pieces are Joined with Steel-On-Steel Connectors for Durability
- Removable & Replaceable Cushions
- Molded & One-Piece Cushions are 10X Thicker than Fabrics or Coated Materials are Non-Porous, Fluid, Puncture, and Pick Resistant
- Easily Clean with Commercial Detergents, Steam or Bleach-Based Agents to Maintain a Humanizing, Healthy and Safe Environment of Care
- Cushions Bolt to Unique & Concealed Internal Steel Seat Support System for Durability & Safety
- Heavy-Duty Chrome Plated, Adjustable Floor Leveling Glide
- Specially Formulated ModuV Sealer & Topcoat – Disinfect with Bleach or Other Commercial Sanitizers for a Healthier & Humane Environment
- Fire Retardant & Self-Extinguishing for Safety



810-01-1

Square Back Cushion
32"d x 27.5"w x 32"h
16" Seat Height
20.5" Arm Height



810-02-1

Square Back Cushions
32"d x 53.5"w x 32"h
16" Seat Height
20.5" Arm Height



810-03-1

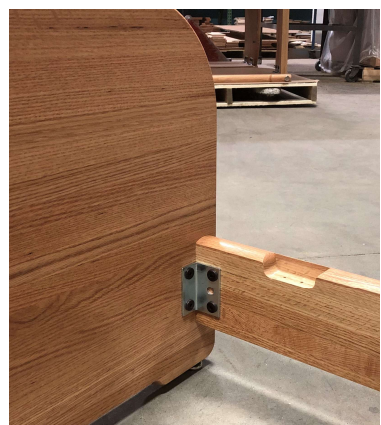
Square Back Cushions
32"d x 77"w x 32"h
16" Seat Height
20.5" Arm Height



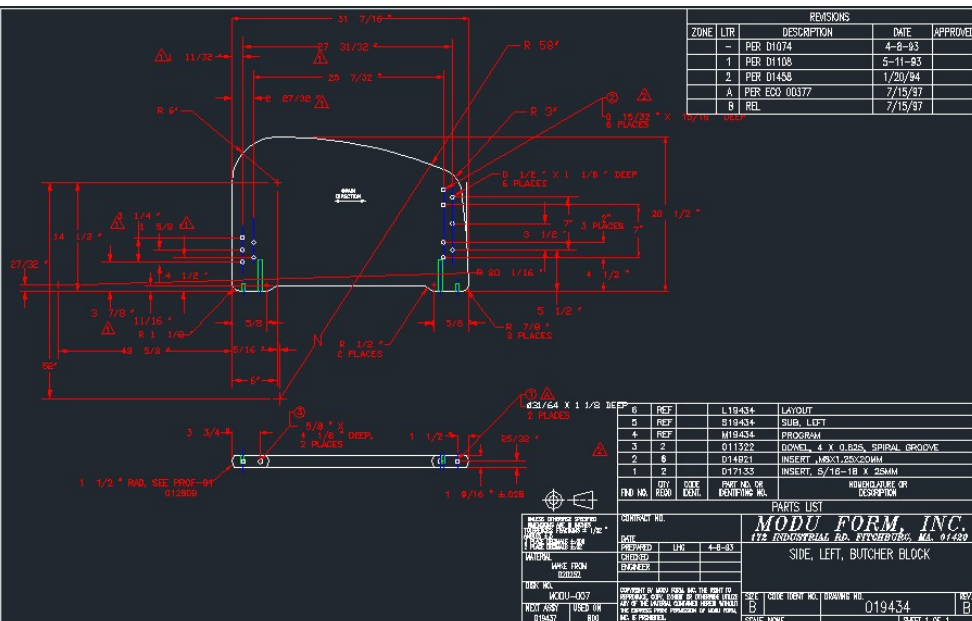
MODUESQUE LOUNGE

Frame Materials & Construction

- Solid, Northern Red Oak Butcher Block Blanks are Machined & Drilled on Computer Controlled Routers for Accuracy
- Sides Feature 1" Wide x 1-9/16" Thick Staves with Rounded Top Edges and Fronts
- Steel Threaded Inserts Driven into Sides, Back and Front Rail for Assembly
- Nickel Plated Steel Brackets and Bolts with Thread-Locking Glue Used for Connection
- Cushions Connected to Steel Support System. Frame Shall Contain Punched Holes and Welded Construction; Black Powder Coated
- All Parts are Fabricated with Inter-Changeable and Replaceable Parts and Hardware
- Heavy-Duty Chrome Plated, Adjustable Floor Leveling Glide



Cushions Bolt to Unique Internal Steel Seat Support System



MODUESQUE LOUNGE

Cushions & Attachment



Rotationally Molded Vinyl Cushion with Flexible Polyurethane Foam Core and Steel Threaded Attachment Rods

Removable and Replaceable



MODUESQUE

STATEMENT OF COLORS



Drift - 719



Earthy - 728



Leaf - 220



Splash - 225



Slate Blue - 426



Cobalt - 404



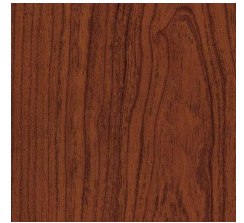
Flannel Gray - 845



Black - 901

Wood Finishes

Natural Oak as Shown



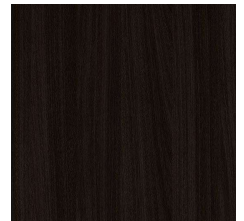
Cherry



Light Cherry



Stone



Dark Mocha



Walnut

MODU FORM®



MODUESQUE LOUNGE SEATING

ModuForm, Inc.
172 Industrial Road
Fitchburg, MA 01420
(978) 345-7942
moduform.com