



FEATURES & BENEFITS

One-Piece Molded Bed Platform

Seamless construction eliminates joints and attachment points around the sleep surface, reducing contraband concealment, fluid intrusion, and long-term maintenance concerns.

Foam-Reinforced Bed Structure

Rigid polyurethane foam reinforcement increases stiffness across the deck, limiting flex, movement, and noise during repositioning or transfers.

Polyethylene Molded Construction

Durable, impact-resistant polyethylene construction provides a non-porous, easy-to-clean surface suited for high-use behavioral healthcare environments.

Flush-to-Wall Bed Geometry

Designed to sit tight against room walls, minimizing perimeter gaps commonly exploited for contraband concealment or unsafe behaviors.

Crowned Bed Deck Geometry with Integrated Risers

Subtle crown directs fluids away from the sleep surface while molded risers promote airflow beneath the mattress to support hygiene and faster cleanup.

Designed for Improved Mobility

Allows patients and caregivers to step closer to the bed, supporting safer movement, assistance, and transfers.

Standard Mattress Compatibility

Designed to accommodate a standard 36" x 80" mattress (sold separately).

Concealed Anchoring Design

Floor anchoring is largely hidden from view, maintaining a clean, uncluttered appearance while supporting secure installation where required.

Designed for High-Acuity Behavioral Healthcare

Engineered specifically for psychiatric inpatient, forensic, detox, and constant-observation settings where safety, durability, and predictability are critical.

Fire Performance Compliance

Designed to meet applicable fire-safety requirements for behavioral healthcare environments.

Platform Bed

The Moxie Collection

SPECIFICATIONS

MX9
40"d x 84"w x 17.5"h



No Springs



No Sharp
Corners



Reduced
Noise



Reduced
Ligature



**MODU
FORM.**

172 Industrial Rd., Fitchburg, MA 01420
978.345.7942 | www.moduform.com



FEATURES & BENEFITS

One-Piece Molded Bed Platform

Seamless construction eliminates joints and attachment points around the sleep surface, reducing contraband concealment, fluid intrusion, and long-term maintenance concerns.

Foam-Reinforced Bed Structure

Rigid polyurethane foam reinforcement increases stiffness across the deck, limiting flex, movement, and noise during repositioning or transfers.

Polyethylene Molded Construction

Durable, impact-resistant polyethylene construction provides a non-porous, easy-to-clean surface suited for high-use behavioral healthcare environments.

Flush-to-Wall Bed Geometry

Designed to sit tight against room walls, minimizing perimeter gaps commonly exploited for contraband concealment or unsafe behaviors.

Crowned Bed Deck Geometry with Integrated Risers

Subtle crown directs fluids away from the sleep surface while molded risers promote airflow beneath the mattress to support hygiene and faster cleanup.

Designed for Improved Mobility

Allows patients and caregivers to step closer to the bed, supporting safer movement, assistance, and transfers.

Standard Mattress Compatibility

Designed to accommodate a standard 36" x 80" mattress (sold separately).

Concealed Anchoring Design

Floor anchoring is largely hidden from view, maintaining a clean, uncluttered appearance while supporting secure installation where required.

Designed for High-Acuity Behavioral Healthcare

Engineered specifically for psychiatric inpatient, forensic, detox, and constant-observation settings where safety, durability, and predictability are critical.

Fire Performance Compliance

Designed to meet applicable fire-safety requirements for behavioral healthcare environments.

Platform Storage Bed

The Moxie Collection

SPECIFICATIONS

MX9-CUB
40"d x 84"w x 20"h



No Springs



No Sharp
Corners



Reduced
Noise



Reduced
Ligature



**MODU
FORM.**

172 Industrial Rd., Fitchburg, MA 01420
978.345.7942 | www.moduform.com



FEATURES & BENEFITS

One-Piece Molded Construction

Seamless, one-piece molded design eliminates joints and fasteners, reducing contraband concealment, fluid intrusion, and opportunities for tampering.

Durable Polyethylene Construction

Impact-resistant, non-porous polyethylene supports high-use behavioral healthcare environments while remaining easy to clean and maintain.

Ligature- and Fluid-Resistant Geometry

Rounded corners, eased edges, and seamless surfaces reduce ligature risk while limiting areas where fluids or contaminants can collect.

Puncture-Resistant Construction

Thick-walled molded geometry resists damage from aggressive use and helps maintain structural integrity over repeated deployments.

Stackable, Space-Efficient Design

Designed to stack vertically for efficient storage, allowing facilities to deploy additional sleeping capacity without permanent footprint expansion.

Lightweight, Easily Deployable Form

Molded construction allows the cot to be quickly moved, positioned, and removed as operational needs change.

Rounded Corners and Edges

Softened geometry minimizes injury risk for patients and staff during use, transport, and storage.

Color-Through Molded Material

Homogeneous color runs throughout the material, helping maintain a consistent appearance even with surface wear.

Fire Performance Compliance

Designed to meet applicable fire-safety requirements for behavioral healthcare environments.

Cot

The Moxie Collection

SPECIFICATIONS

MX9-COT

30.75"d x 82.25"w x 8.25"h

Sleep Surface: 25" x 75"



No Springs



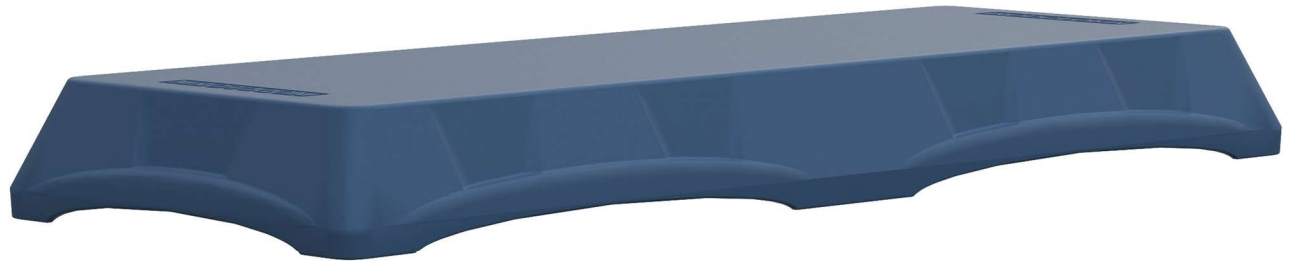
No Sharp
Corners



No Puddling
Fabric



Reduced
Ligature



**MODU
FORM.**

172 Industrial Rd., Fitchburg, MA 01420

978.345.7942 | www.moduform.com



FEATURES & BENEFITS

One-Piece Molded Construction

Eliminates seams, joints, and exposed fasteners to reduce contraband concealment, fluid intrusion, and opportunities for tampering or component failure.

Foam-Reinforced Molded Structure

Rigid polyurethane foam reinforcement creates a solid, stable body that resists flexing, absorbs impact, and minimizes noise during use.

Durable Polyethylene Construction

Impact-resistant, non-porous polyethylene supports high-use environments while simplifying cleaning and long-term maintenance.

Ligature-Resistant Geometry

Rounded corners, eased edges, seamless surfaces, and the absence of exposed hardware reduce ligature risk without reliance on add-on components.

Chemical- and Steam-Resistant Surfaces

Withstands aggressive hospital disinfectants—including bleach, peroxide, quaternary cleaners, and steam—without degrading, staining, or absorbing contaminants.

Purpose-Engineered Floor-Mounting Capability

Integrated mounting flanges on select desks, dressers, and nightstands support secure anchoring. Recessed access points allow installation without interfering with storage or cleaning.

Designed for High-Acuity Behavioral Healthcare

Engineered specifically for psychiatric inpatient, forensic, detox, and constant-observation settings where safety, durability, and predictability are critical.

Fire Performance Compliance

Designed to meet applicable fire-safety requirements for behavioral healthcare environments.

Nightstand

The Moxie Collection

SPECIFICATIONS

MX5A-2O
18"d x 20"w x 24"h



No Springs



No Sharp
Corners



Reduced
Noise



Reduced
Ligature



**MODU
FORM.**

172 Industrial Rd., Fitchburg, MA 01420
978.345.7942 | www.moduform.com



FEATURES & BENEFITS

One-Piece Molded Construction

Eliminates seams, joints, and exposed fasteners to reduce contraband concealment, fluid intrusion, and opportunities for tampering or component failure.

Foam-Reinforced Molded Structure

Rigid polyurethane foam reinforcement creates a solid, stable body that resists flexing, absorbs impact, and minimizes noise during use.

Durable Polyethylene Construction

Impact-resistant, non-porous polyethylene supports high-use environments while simplifying cleaning and long-term maintenance.

Ligature-Resistant Geometry

Rounded corners, eased edges, seamless surfaces, and the absence of exposed hardware reduce ligature risk without reliance on add-on components.

Chemical- and Steam-Resistant Surfaces

Withstands aggressive hospital disinfectants—including bleach, peroxide, quaternary cleaners, and steam—without degrading, staining, or absorbing contaminants.

Purpose-Engineered Floor-Mounting Capability

Integrated mounting flanges on select desks, dressers, and nightstands support secure anchoring. Recessed access points allow installation without interfering with storage or cleaning.

Designed for High-Acuity Behavioral Healthcare

Engineered specifically for psychiatric inpatient, forensic, detox, and constant-observation settings where safety, durability, and predictability are critical.

Fire Performance Compliance

Designed to meet applicable fire-safety requirements for behavioral healthcare environments.



Dresser

The Moxie Collection

SPECIFICATIONS

MX4A-3O
18"d x 20"w x 24"h



No Springs



No Sharp
Corners



Reduced
Noise



Reduced
Ligature

**MODU
FORM.**

172 Industrial Rd., Fitchburg, MA 01420
978.345.7942 | www.moduform.com



FEATURES & BENEFITS

One-Piece Molded Construction

Eliminates seams, joints, and exposed fasteners to reduce contraband concealment, fluid intrusion, and opportunities for tampering or component failure.

Foam-Reinforced Molded Structure

Rigid polyurethane foam reinforcement creates a solid, stable body that resists flexing, absorbs impact, and minimizes noise during use.

Durable Polyethylene Construction

Impact-resistant, non-porous polyethylene supports high-use environments while simplifying cleaning and long-term maintenance.

Ligature-Resistant Geometry

Rounded corners, eased edges, seamless surfaces, and the absence of exposed hardware reduce ligature risk without reliance on add-on components.

Chemical- and Steam-Resistant Surfaces

Withstands aggressive hospital disinfectants—including bleach, peroxide, quaternary cleaners, and steam—without degrading, staining, or absorbing contaminants.

Purpose-Engineered Floor-Mounting Capability

Integrated mounting flanges on select desks, dressers, and nightstands support secure anchoring. Recessed access points allow installation without interfering with storage or cleaning.

Designed for High-Acuity Behavioral Healthcare

Engineered specifically for psychiatric inpatient, forensic, detox, and constant-observation settings where safety, durability, and predictability are critical.

Fire Performance Compliance

Designed to meet applicable fire-safety requirements for behavioral healthcare environments.

Writing Desk

The Moxie Collection

SPECIFICATIONS

MX3YNP
24"d x 36"w x 30"h



No Springs



No Sharp
Corners



Reduced
Noise



Reduced
Ligature



**MODU
FORM.**

172 Industrial Rd., Fitchburg, MA 01420
978.345.7942 | www.moduform.com



FEATURES & BENEFITS

One-Piece Molded Construction

Eliminates seams, joints, and exposed fasteners to reduce contraband concealment, fluid intrusion, and opportunities for tampering or component failure.

Foam-Reinforced Molded Structure

Rigid polyurethane foam reinforcement creates a solid, stable body that resists flexing, absorbs impact, and minimizes noise during use.

Durable Polyethylene Construction

Impact-resistant, non-porous polyethylene supports high-use environments while simplifying cleaning and long-term maintenance.

Ligature-Resistant Geometry

Rounded corners, eased edges, seamless surfaces, and the absence of exposed hardware reduce ligature risk without reliance on add-on components.

Chemical- and Steam-Resistant Surfaces

Withstands aggressive hospital disinfectants—including bleach, peroxide, quaternary cleaners, and steam—without degrading, staining, or absorbing contaminants.

Purpose-Engineered Floor-Mounting Capability

Integrated mounting flanges on select desks, dressers, and nightstands support secure anchoring. Recessed access points allow installation without interfering with storage or cleaning.

Designed for High-Acuity Behavioral Healthcare

Engineered specifically for psychiatric inpatient, forensic, detox, and constant-observation settings where safety, durability, and predictability are critical.

Fire Performance Compliance

Designed to meet applicable fire-safety requirements for behavioral healthcare environments.

Wall Mounted Desk

The Moxie Collection

SPECIFICATIONS

MX3WD
23"d x 37.5"w x 26"h



No Springs



No Sharp
Corners



Reduced
Noise



Reduced
Ligature



**MODU
FORM.**

172 Industrial Rd., Fitchburg, MA 01420
978.345.7942 | www.moduform.com



FEATURES & BENEFITS

One-Piece Molded Construction

Seamless, one-piece molded design eliminates joints and fasteners, reducing contraband concealment, fluid intrusion, and opportunities for tampering.

Durable Polyethylene Construction

Impact-resistant, non-porous polyethylene supports high-use behavioral healthcare environments while remaining easy to clean and maintain.

Ballast-Ready Design

Integrated threaded nylon plug allows optional internal weighting when additional stability is required, without altering the exterior form.

Ligature-Resistant Geometry

Rounded corners, eased edges, and seamless surfaces reduce ligature risk and support safer use in high-acuity environments.

Puncture-Resistant Construction

Thick-walled molded geometry resists damage from aggressive use and helps maintain long-term structural integrity.

Integrated Floor-Mount Capability

Built-in corner flange supports secure floor anchoring where required, providing stability when ballasting is not preferred or permitted.

Fire Performance Compliance

Designed to meet applicable fire-safety requirements for behavioral healthcare environments.



Stool

The Moxie Collection

SPECIFICATIONS

MXST
15"d x 18"w x 18"h



No Springs



No Sharp
Corners



No Puddling
Fabric



Reduced
Ligature

**MODU
FORM.**

172 Industrial Rd., Fitchburg, MA 01420
978.345.7942 | www.moduform.com



FEATURES & BENEFITS

One-Piece Molded Construction

Eliminates seams, joints, and exposed fasteners to reduce contraband concealment, fluid intrusion, and opportunities for tampering or component failure.

Foam-Reinforced Molded Structure

Rigid polyurethane foam reinforcement creates a solid, stable body that resists flexing, absorbs impact, and minimizes noise during use.

Durable Polyethylene Construction

Impact-resistant, non-porous polyethylene supports high-use environments while simplifying cleaning and long-term maintenance.

Ligature-Resistant Geometry

Rounded corners, eased edges, seamless surfaces, and the absence of exposed hardware reduce ligature risk without reliance on add-on components.

Chemical- and Steam-Resistant Surfaces

Withstands aggressive hospital disinfectants—including bleach, peroxide, quaternary cleaners, and steam—without degrading, staining, or absorbing contaminants.

Purpose-Engineered Floor-Mounting Capability

Integrated mounting flanges on select desks, dressers, and nightstands support secure anchoring. Recessed access points allow installation without interfering with storage or cleaning.

Designed for High-Acuity Behavioral Healthcare

Engineered specifically for psychiatric inpatient, forensic, detox, and constant-observation settings where safety, durability, and predictability are critical.

Fire Performance Compliance

Designed to meet applicable fire-safety requirements for behavioral healthcare environments.

Wall Mounted Shelf

The Moxie Collection

SPECIFICATIONS

MX2-1O
13"d x 31"w x 21"h



No Springs



No Sharp
Corners



Reduced
Noise



Reduced
Ligature



**MODU
FORM.**

172 Industrial Rd., Fitchburg, MA 01420
978.345.7942 | www.moduform.com



FEATURES & BENEFITS

One-Piece Molded Construction

Seamless, one-piece molded design eliminates joints and exposed fasteners, reducing contraband concealment, fluid intrusion, and opportunities for tampering.

Durable Polyethylene Construction

Impact-resistant, non-porous polyethylene supports high-use behavioral healthcare environments while remaining easy to clean and maintain.

Slope-Top Geometry

Angled top surface discourages climbing and placement of items, helping reduce unsafe behaviors and unintended use.

Improved Lines of Sight

Sloped top and softened transitions minimize horizontal surfaces, supporting clearer visual monitoring and reducing hidden areas within the room.

Reduced Concealment Zones

Geometry is intentionally shaped to limit ledges, shadowed areas, and flat surfaces where contraband is commonly hidden.

Reinforced Top Rail Geometry

Thicker, more substantial top rails increase durability while making edges more difficult to grip, supporting safer interaction in high-acuity environments.

Ligature-Resistant Design

Rounded corners, eased edges, seamless surfaces, and minimized attachment points reduce ligature risk without reliance on add-on components.

Wall-Mounted Installation

Designed for secure wall mounting to maintain a controlled footprint and support predictable placement within the room.

Fire Performance Compliance

Designed to meet applicable fire-safety requirements for behavioral healthcare environments.



Wall Mounted Storage Shelf

The Moxie Collection

SPECIFICATIONS

MX6WU-4O
14"d x 27"w x 68.25"h



No Springs



No Sharp
Corners



Reduced
Noise



Reduced
Ligature

**MODU
FORM.**

172 Industrial Rd., Fitchburg, MA 01420
978.345.7942 | www.moduform.com